



Badger Lane

Grange Park, Northampton

oriordanbond
SALES & LETTINGS



Badger Lane

Grange Park
NN4 5DH

Guide Price
£350,000

A three bedroom detached property located within the popular Grange Park development. The property is located within close proximity of Foxfield Country Park, Woodland View Primary School, shops and other amenities.

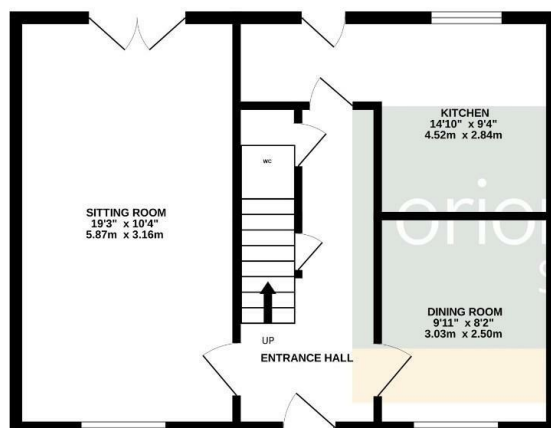
Offered for sale with no onward chain, the accommodation comprises entrance hall, cloakroom/WC, dual aspect sitting room with French doors to the rear garden, kitchen with utility area and a dining room. The first floor offers a master bedroom with built-in wardrobes and en-suite, two further bedrooms with built-in wardrobe space and a four-piece family bathroom. Outside to the front is a lawned garden and off road parking leading to a single garage. The rear garden is mainly laid to lawn with a paved patio and decking area and enclosed by fencing. Further benefits include uPVC double glazing and gas radiator heating. (A/956/M)

- Three bedroom detached family home
- En-suite to master bedroom
- Two reception rooms
- Enclosed rear garden
- Off road parking
- No onward chain

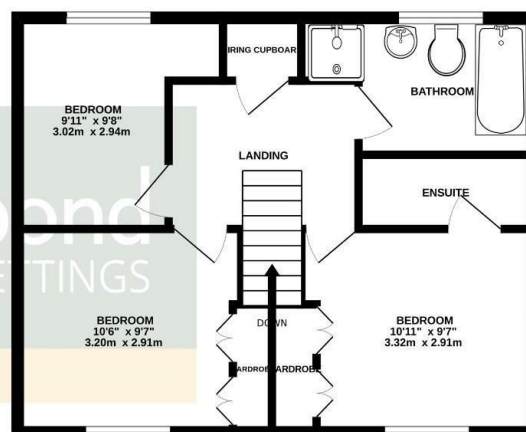




GROUND FLOOR



1ST FLOOR



Whilst every attempt has been made to ensure the accuracy of the floorplan contained here, measurements of doors, windows, rooms and any other items are approximate and no responsibility is taken for any error, omission or mis-statement. This plan is for illustrative purposes only and should be used as such by any prospective purchaser. The services, systems and appliances shown have not been tested and no guarantee as to their operability or efficiency can be given.
Made with Metropix ©2025



Additional information

- Council Tax Band: D
- Energy Efficiency Rating: C

Viewing

Viewing strictly by appointment – details below

Disclaimer

O'Riordan Bond Estate Agents Limited has not tested apparatus, equipment, fittings or services and so cannot verify they are in working order. The buyer is advised to obtain verification from their solicitor or surveyor.

O'Riordan Bond Grange Park Sales
01604 432007

grangepark@oriordanbond.co.uk

